



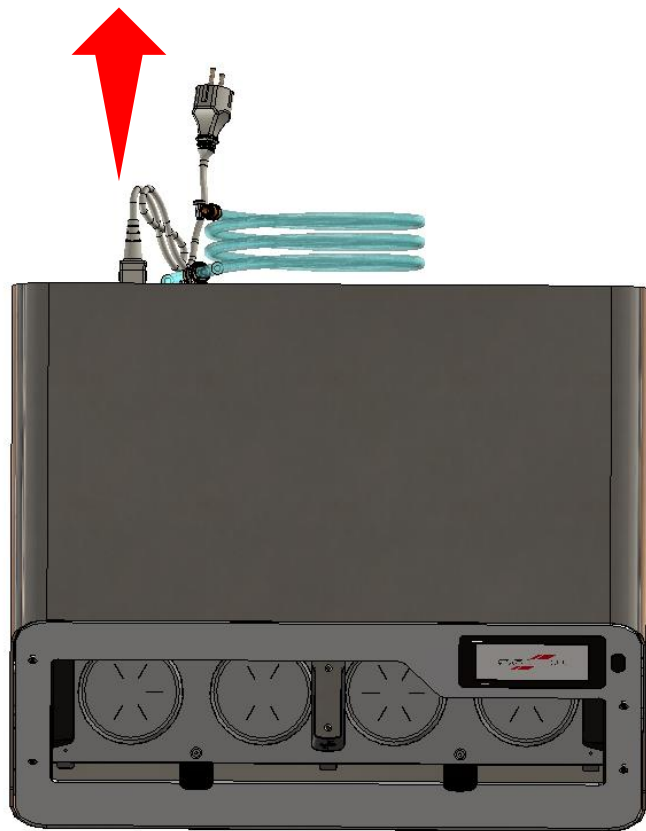
Repair manual BIOSTAR® 4-Aligner

7 Replacing the rubber buffer / cleaning the running surface

Replacing the rubber buffer / cleaning the running surface

ERROR 013 Model support plate is not in end position → End sensor not active

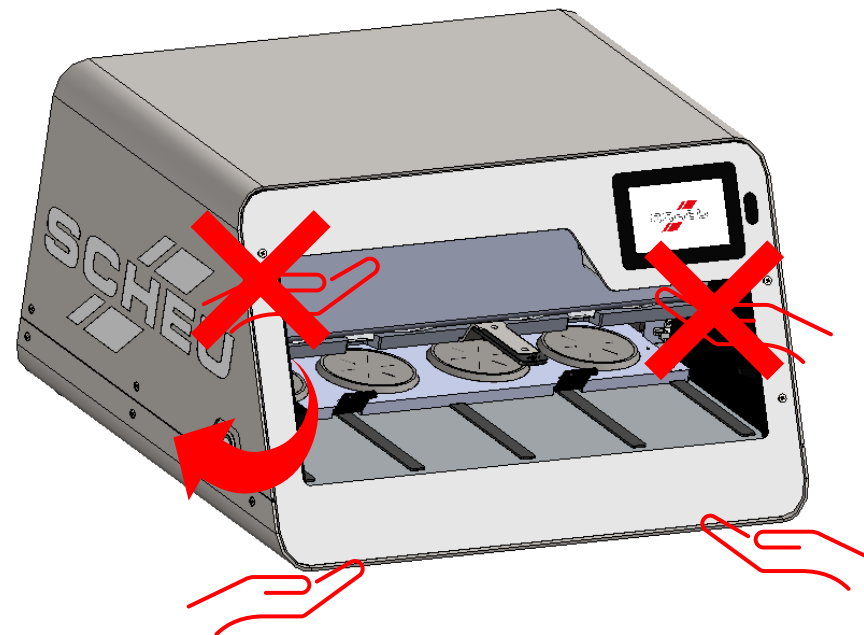
1 DISCONNECT THE DEVICE FROM THE POWER SUPPLY!



2 Turn the appliance so that you can reach the screws on both sides.

Do NOT lift the device by the FRONT panel but reach under the device!

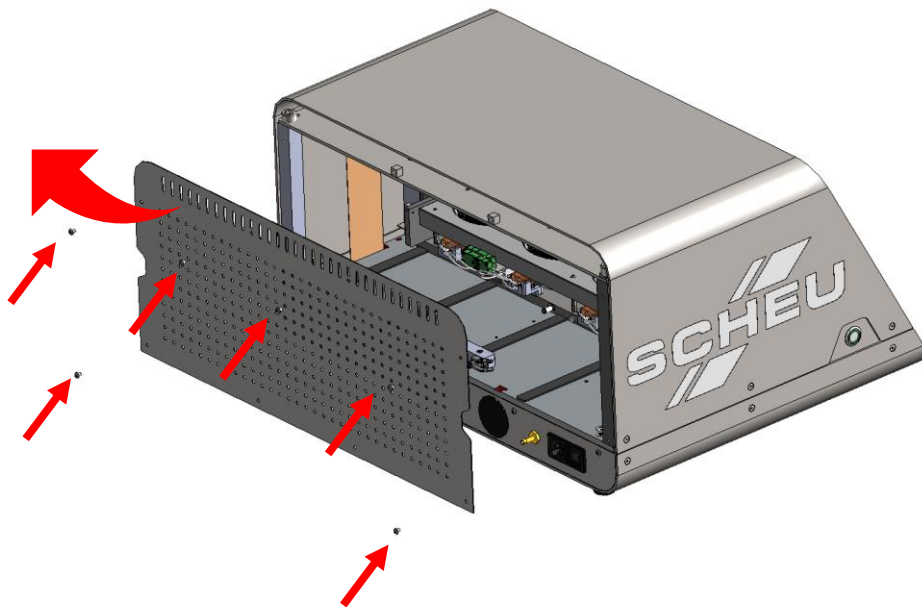
Make sure that the current software version is installed.



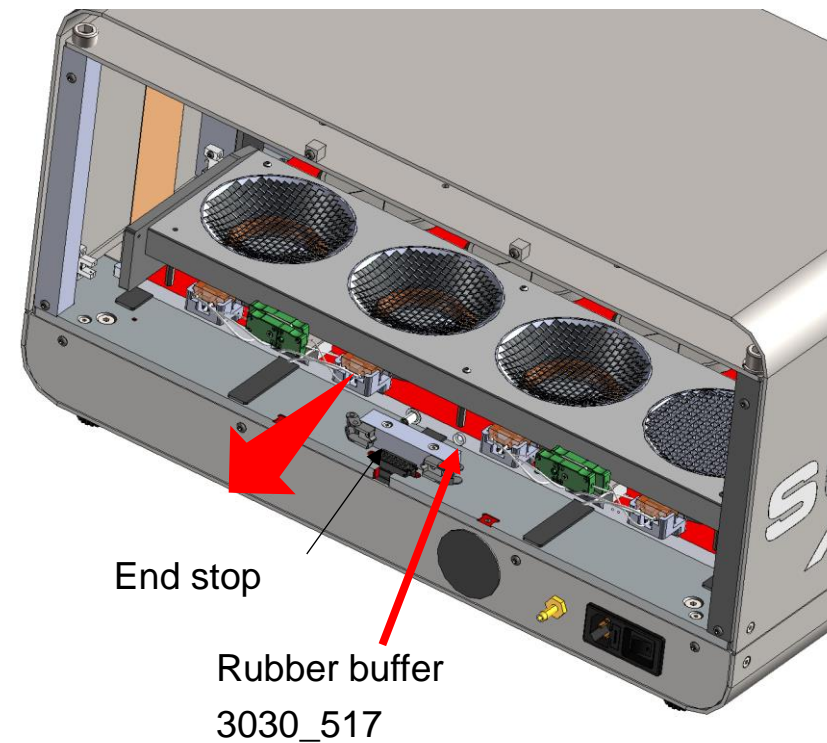
Replacing the rubber buffer / cleaning the running surface

ERROR 013 Model support plate is not in end position → End sensor not active

3 Loosen the 6 screws on the back panel and put the back panel to one side.



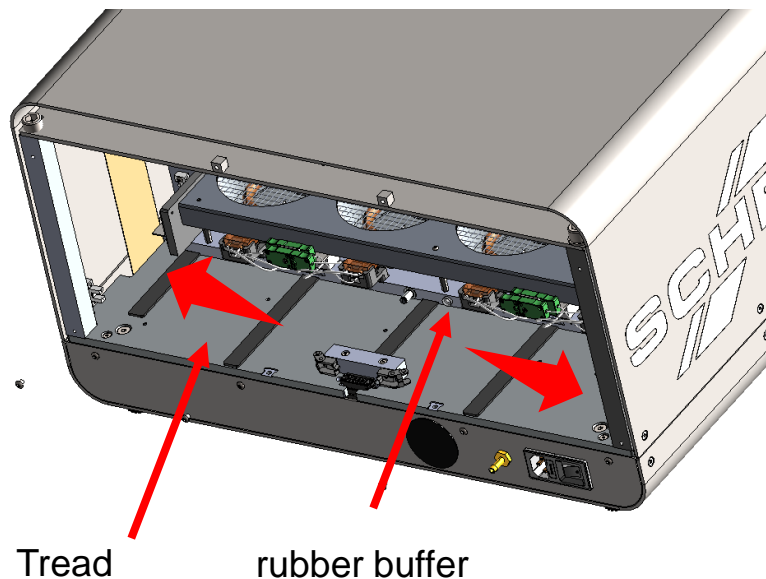
4 Pull back the base plate with the heater.



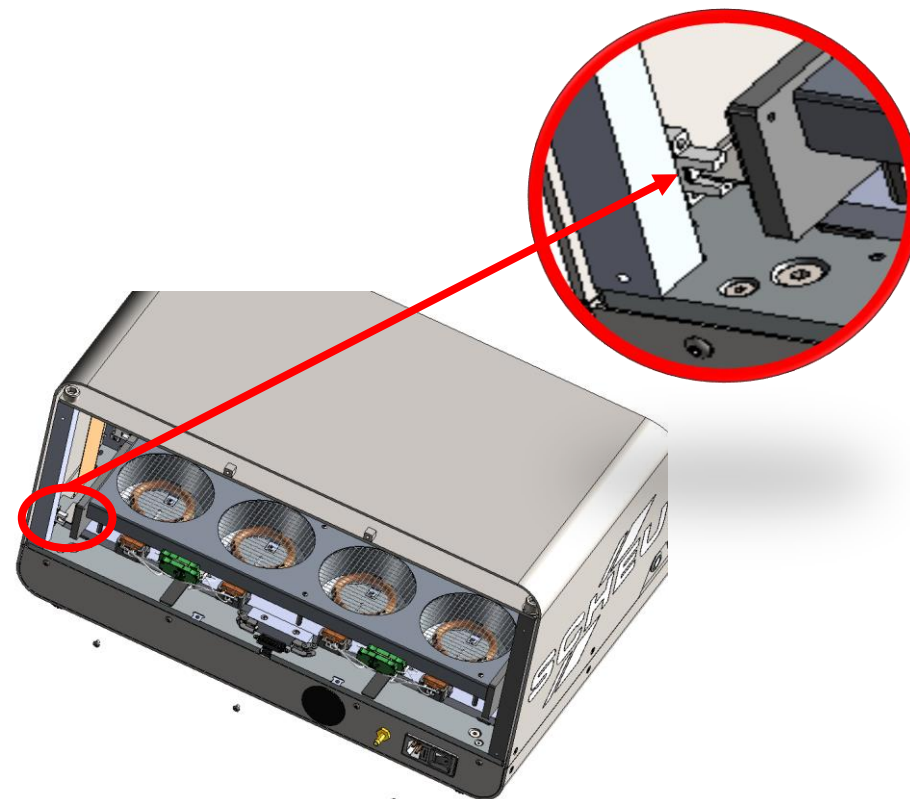
Replacing the rubber buffer / cleaning the running surface

ERROR 013 Model support plate is not in end position → End sensor not active

- 5** If the rubber buffer is no longer present, check the running surface (surface between the base plate and the movable model support plate) to see if it is there and glue it in place with superglue. Check the running surface for other objects and sweep or remove them.



- 6** Once the running surface has been cleaned, pull it back as far as it will go so that the end sensor can be reactivated.



| POS-NR. | BENENNUNG | BESCHREIBUNG | MENGE |
|---------|-----------------|--------------------------------------|-------|
| 1 | 3030_117 | Grundplatte für Modellstützplatten | 1 |
| 2 | 3030_820 | BG Modellstützplatte | 4 |
| 3 | 3030_513 | Fedendes Druckstück A6 | 4 |
| 4 | 3030_119 | Seitenwand Rechts | 1 |
| 5 | 3030_209 | Sensorplatte | 1 |
| 6 | 3030_120 | Seitenwand Links | 1 |
| 7 | 3030_210 | Reflektor | 4 |
| 8 | 3030_121 | Montagestück Strahler | 4 |
| 9 | 3030_906 | Distanzbolzen M3x45 | 6 |
| 10 | 3030_909 | Porzellanklemme | 2 |
| 11 | 3030_211 | Griff für Modellstützplatte | 2 |
| 12 | 3030_515 | Rechteckmagnet 30x13,5x5 | 2 |
| 13 | 3030_516 | Soft Close Dämpfer | 1 |
| 14 | 3030_517 | Gummischlag | 1 |
| 15 | 3030_518 | ISO 7380 - M4x8-St Zinc plated | 12 |
| 16 | 3030_555 | DIN 7991 - M4 x 8 --- 5.6N | 2 |
| 17 | ISO 7380 - M3x6 | ISO 7380 - M3x6-St Zinc plated | 2 |
| 18 | 3130_515 | Schenkeifeder | 12 |
| 19 | 3030_535 | Flachkopfschraube DIN 912 M3 x 10 | 15 |
| 20 | 3030_562 | Zylinderschraube DIN 912 M4 x 20 | 4 |
| 21 | 3030_224 | Blech f. Steckverbindung Thermokabel | 2 |
| 22 | 3030_922 | Steckverbinder Thermoelement Mutter | 4 |
| 23 | 3030_923 | Steckverbinder Thermoelement Vater | 4 |
| 24 | 3030_567 | Unsenkopfschraube M2,5x22 | 2 |